



nhorvive
RESEARCH INSTITUTE, LLC.

REVIVAL
RESEARCH INSTITUTE, LLC.

REVIVE
RESEARCH INSTITUTE, INC.



CARDIOLOGY RESEARCH PORTFOLIO



**DRIVING HEART HEALTH
THROUGH CLINICAL RESEARCH**

MESSAGE FROM THE CEO



MAZHAR JAFFRY

MBBS, MBA, MHA | 32+ YEARS OF EXPERIENCE IN
HEALTHCARE LEADERSHIP

WELCOME

As the CEO of the Revival's Site Network, I'm incredibly proud to share something that represents more than just progress, it reflects our shared purpose: to change what clinical research feels like, both for patients and for our partners. One clinical trial at a time, we're making that vision real.

What started as a bold idea has now grown into a network of dedicated teams across the country, each with its own strength, whether it's driving innovation, ensuring smooth operations, or providing care that truly sees the patient behind the protocol. Together, we're not just running sites; we're building something meaningful.

We've especially seen the impact of this in cardiology research, where our efforts are helping to shape better outcomes for people living with heart conditions. And that's what

keeps us going, the chance to make a difference where it matters most.

As we look ahead, we're staying grounded in our values, open to the challenges of tomorrow, and committed to always raising the bar for clinical research and patient care.

Thank you for believing in what we do, and for being part of this journey.

Sincerely,

MAZHAR JAFFRY

Chief Executive Officer & President



COMPANY OVERVIEW

Revival's Site Network is an integrated research network dedicated to delivering patient-centric clinical trials, ensuring high-quality care, and serving a diverse community. Our focus is on optimizing and streamlining processes through the integration of innovative technologies, aiming to minimize risks while conducting efficient trials for our sponsors.

We prioritize tailoring our strategies to meet the unique requirements of each clinical trial, ensuring strict compliance with study protocols and timely regulatory submissions. Central to our approach is transparent communication, which fosters open channels for all stakeholders, especially concerning patient safety and data integrity.

BUILDING STRONG PARTNERSHIPS FOR BETTER CLINICAL TRIAL OUTCOMES

We emphasize fostering strong partnerships with healthcare providers and research institutions, allowing us to expand our reach and access diverse patient populations. This collaboration drives better trial outcomes and contributes to advancing medical knowledge.

DRIVING EFFICIENCY & INNOVATION IN PATIENT-CENTRIC CLINICAL RESEARCH

Our reliable and predictable processes enable us to meet critical milestones faster than the industry average. We leverage real-world insights and research expertise to develop patient-centric solutions in clinical research that can be effectively implemented on a larger scale.



OUR MISSION

Revival's Site Network aims to transform healthcare with cutting-edge research studies, focusing on safety, innovation, and quality. Our mission is to ethically advance medicine by conducting rigorous and groundbreaking clinical trials. As a trusted and reliable partner in healthcare, we strive to improve lives by ensuring the highest standards in our clinical trials, fostering a culture of excellence, and pushing the boundaries of medical knowledge. We are committed to collaborating with healthcare professionals, patients, and stakeholders to deliver impactful solutions and make a lasting difference in the medical field.



OUR VISION

Revival's Site Network envisions transforming healthcare by collaborating with top pharmaceuticals, leveraging our experts' knowledge to democratize clinical trials and fast-track the accessibility of life-changing therapies. By fostering strong partnerships with leading industry players and utilizing the expertise of our dedicated team, we aim to streamline the clinical trial process, making it more inclusive and efficient. Our goal is to ensure that groundbreaking treatments and therapies are available to all who need them, regardless of their background or circumstances. Through our approach and commitment to excellence, we are changing the landscape of clinical research and improving health outcomes on a global scale.

WHAT WE DO ADVANCING RESEARCH, ENHANCING CARE

At Revival's Site Network, we provide comprehensive clinical trial services across multiple therapeutic areas, designed to accelerate drug and device development while keeping patient care at the heart of every study.



WHERE WE EXCEL



CLINICAL TRIAL MANAGEMENT

Full-service coordination from site selection to close-out, ensuring compliance, quality, and efficiency.



PATIENT RECRUITMENT & RETENTION

Proven strategies to engage diverse populations and ensure continuity throughout the study lifecycle.



THERAPEUTIC EXPERTISE

Conducting Phase I–IV trials across a range of conditions including pulmonology, cardiology, endocrinology, psychiatry, infectious diseases, and more.



REGULATORY & COMPLIANCE SUPPORT

Navigating complex regulatory environments with precision and proactive oversight.



OUTPATIENT-BASED STUDIES

Offering convenience and accessibility for participants, while maintaining high standards of data integrity and patient safety.



DATA COLLECTION & MANAGEMENT

Using advanced technologies for accurate, real-time data capture and reporting.

Through a patient-centric model and a results-driven mindset, we bridge the gap between innovation and impact, bringing tomorrow's treatments closer to today's patients.

OUR PILLARS



FAST STUDY START-UP

As a clinical research site network, our study start-up process is designed for speed and efficiency, allowing us to activate sites quickly and begin enrollment without delays. With our streamlined workflows, we minimize start-up timelines by accelerating contract negotiations, ethics approvals, and site initiations. Our experienced team ensures rapid document collection and staff readiness. This enables sponsors to launch trials quickly and meet tight deadlines, bringing therapies to patients sooner.

HIGHEST PATIENT RECRUITMENT

Our approach to patient recruitment is strategic and effective, ensuring high enrollment rates and diverse participant pools. By employing targeted recruitment strategies and engaging patients through multiple channels, we consistently meet our enrollment targets on time.

Our efforts also focus on retention, ensuring participants remain engaged throughout the study duration.



QUERY-FREE DATA

At Revival's Site Network, we pride ourselves on providing query-free data, ensuring accuracy, precision, and compliance with regulatory standards. Our data undergoes meticulous review and verification processes, guaranteeing that it meets the highest quality standards. This commitment to excellence results in fewer queries, reduced delays, and a smoother path to approval for our clients.

THERAPEUTIC AREAS



DERMATOLOGY

- Atopic Dermatitis (Adolescents & Adults)
- Pediatric Hidradenitis Suppurativa
- Alopecia Areata
- Androgenetic Alopecia
- Hidradenitis Suppurativa
- Atopic Dermatitis
- Chronic Spontaneous Urticaria
- Cutaneous Lupus
- Prurigo Nodularis
- Psoriasis
- Vitiligo
- Rosacea



CARDIOLOGY

- Heart Failure with Kidney Failure
- Chronic Kidney & Cardiovascular Disease
- Pulmonary Hypertension & Heart Failure
- Atrial Fibrillation
- Hypertension
- Heart Failure
- Atherosclerotic Cardiovascular Disease



NEPHROLOGY

- Proteinuria Kidney Disease
- IgA Nephropathy



INTERNAL MEDICINE

- Growth Hormone Deficiency
- Type 1 Diabetes & Type 2 Diabetes
- Diabetic Peripheral Neuropathy (DPN)
- Alzheimer's Disease

THERAPEUTIC AREAS



PSYCHIATRY

- Autism Spectrum Disorder
- Pediatric Bipolar Disorder
- Bipolar Disorder
- Major Depressive Disorder (MDD)
- Obsessive-Compulsive Disorder (OCD)
- Attention Deficit Hyperactivity Disorder (ADHD)



ONCOLOGY

- Advanced Pancreatic Cancer
- Diffuse Large B-Cell Lymphoma
- Indolent Non-Hodgkin's Lymphoma (iNHL)
- Malignant Myeloid Hematologic Neoplasms (Myelofibrosis)
- Metastatic Breast Cancer
- Mutant Solid Tumors
- Relapsed/Refractory Follicular Lymphoma
- Relapsed/Refractory Follicular Non-Hodgkin's Lymphoma
- Uterine Serous Carcinoma



WOMEN'S HEALTH

- Vaginal Yeast Infection
- Endometrial Hyperplasia
- Oral Contraceptive
- Nocturnal Enuresis

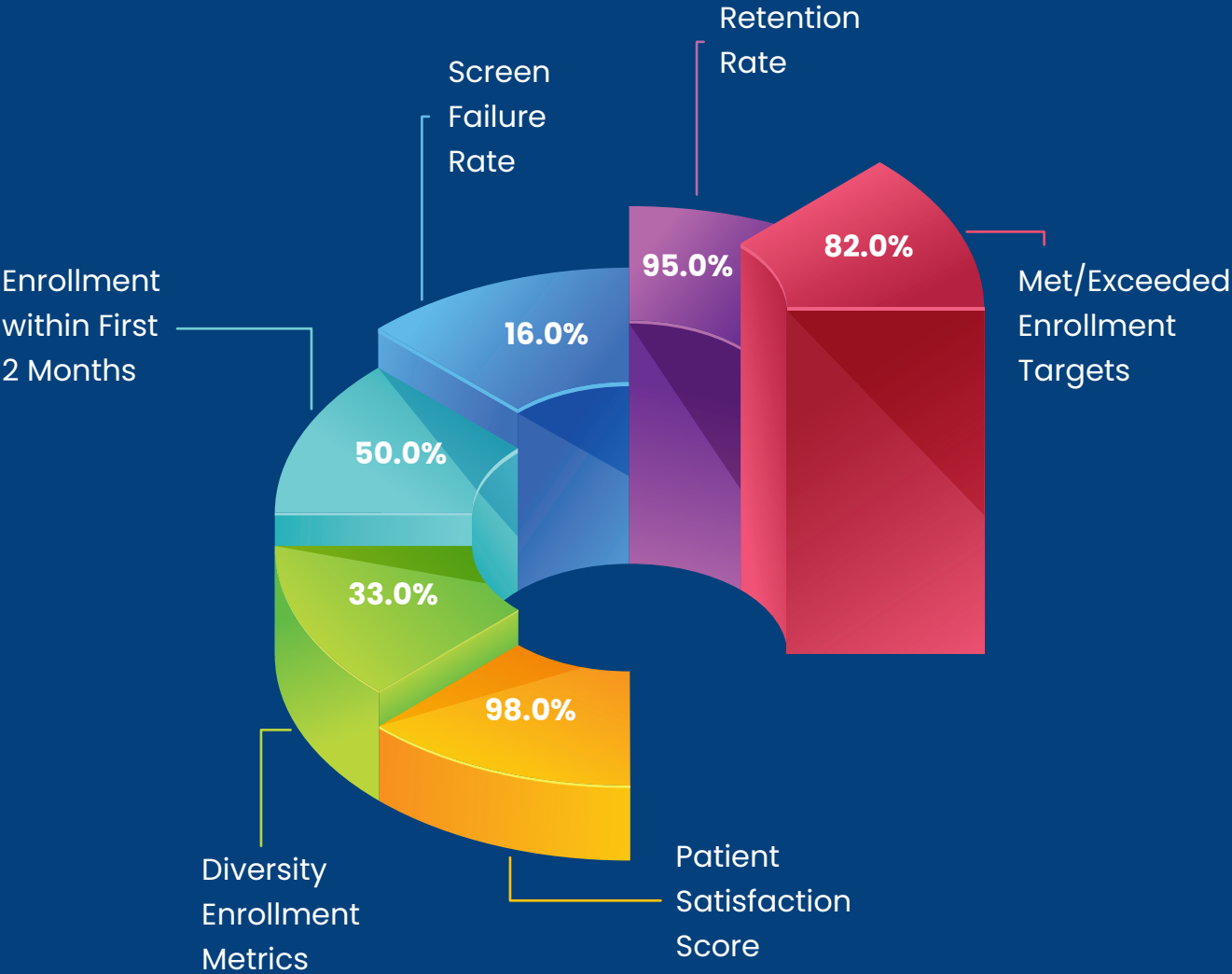


PULMONOLOGY

- Asthma
- COPD
- Shift work disorder
- Obstructive sleep apnea

ROBUST PATIENT ENROLLMENT METRICS

Over the years, we've consistently demonstrated strong and efficient patient enrollment strategies for our clinical trials. Our historic enrollment metrics underscore our commitment to expediency without compromising quality. Detailed percentages further highlight our proficiency in this domain.



OUR SITE NETWORK SETUP IN THE UNITED STATES

Revival's Site Network is actively working towards expanding and increasing access to clinical research in various locations across the United States. Our primary objective is to make clinical trials readily available to the local population of diverse communities. To achieve this, we have formed strong collaborations with experienced and diverse healthcare professionals, as well as organizations including Accountable Care Organizations (ACOs) and Healthcare Networks that provide us with top-notch Principal Investigators and patient populations in need of clinical trials.

Through these partnerships, we strive to ensure that our clinical trials are conducted with the utmost care and precision, delivering valuable insights and potential therapies for the benefit of the communities we serve.



Our PIs work as independent contractors



30+ Principal Investigators & 27 Sub-Investigators throughout the United States



Over 25+ sites interspersed throughout the United States; Michigan, Texas, Nebraska, Georgia, Illinois, North Carolina



STRATEGIC SITE CAPABILITIES FOR CARDIOLOGY STUDIES

In addition to our strong enrollment metrics, our sites are well-equipped to support large-scale cardiology clinical trials. These high-capacity locations enable us to reach a wide and diverse patient population efficiently.

CARDIOLOGY & NEPHROLOGY IN FOCUS

At Revival's Site Network, our Cardiology and Nephrology sites continues to deliver excellence in high-enrollment, high-complexity clinical trials. From rare kidney disorders to multifaceted cardiovascular conditions, our team is equipped with the knowledge, infrastructure, and passion to drive results.

THERAPEUTIC AREAS OF FOCUS



Heart Failure
with Kidney
Failure



Chronic Kidney
Disease &
Cardiovascular
Disease



Pulmonary
Hypertension &
Heart Failure



Atherosclerotic
Cardiovascular
Disease



Ultrasound
of the Heart
Clinical Trials



Atrial
Fibrillation



Hypertension



IgA
Nephropathy
(Berger's Disease)



Proteinuria
Kidney Disorders



ASAD KARIM, M.D.

CARDIOLOGY | 35+ YEARS OF EXPERIENCE

BACKGROUND & EXPERIENCE

Based in Sherman, Texas, Dr. Asad Karim is one of the most recognized cardiologists in the region.

With extensive expertise in Cardiovascular Disease and Interventional Cardiology, Dr. Karim has cared for patients in both research and hospital settings.

He currently practices at the Cardiovascular Wellness Center of Texas and is affiliated with Baylor Scott & White Medical Center.

Throughout his career, Dr. Karim has performed over 15,000 coronary and peripheral diagnostic and interventional procedures, including device implantations. His deep knowledge of cardiovascular diseases and related indications has positioned him as a Principal Investigator for multiple Phase 2 and 3 cardiology clinical trials at Revival Research Institute.

CLINICAL PRACTICE AND EXPERTISE

Since 2000, Dr. Karim has been in private practice, managing cardiovascular conditions at two locations in Sherman and McKinney, Texas. He treats a wide range of conditions, including myocarditis and atrial fibrillation, and provides comprehensive cardiovascular services such as lipid and metabolic disorder management, cardiac stress testing, echocardiography, and pacemaker and defibrillator follow-ups. His extensive experience includes performing over 15,000 coronary and peripheral diagnostic and interventional procedures. Each year, Dr. Karim conducts approximately 150 cardiac catheterizations, 30 pacemaker and ICD implants, and interprets more than 750

RESEARCH INVOLVEMENT AND CLINICAL TRIALS

Dr. Karim has been actively involved in clinical research since 2019 as a Principal Investigator with Revival Research Institute, leading trials in areas such as hypertension, chronic kidney disease, acute coronary syndrome, and myocardial infarction. Prior to joining Revival, he independently led eight clinical trials. Dr. Karim's research site is supported by a well-trained staff and is fully equipped with essential clinical trial tools, including centrifuges, ECG machines, and locked storage for study materials. His team is dedicated to delivering high-quality data and exceptional patient care to all research participants.

WHAT SPONSORS HAVE TO SAY ABOUT DR. KARIM'S SITE

I wanted to provide some feedback about sites 7806 and 7823. I found both sites were run well and would name them both as some of my top sites in this study. I appreciated the prompt response times and follow-up and never really had to worry about whether a query would be answered or an issue taken care of etc. It truly was a pleasure working with you both and I would be happy to refer you for future studies if Parexel does ask my opinion.

Thanks!

"I appreciated the prompt response times and follow-up and never really had to worry about whether a query would be answered or an issue taken care of."

Louis Noble, Senior Clinical Research Associate





SYED SHARIQ AHMED SAGHIR, M.D.

CARDIOLOGY & NEPHROLOGY |
24+ YEARS OF EXPERIENCE

BACKGROUND & EXPERIENCE

Dr. Syed Shariq Ahmed Saghir is a Nephrologist practicing in McKinney and Sherman, Texas. Specializing in acute renal failure, chronic renal failure and dialysis, and hypertension, Dr. Saghir has expertise in hypertension, chronic kidney disease, glomerular disease, and anti-glomerular basement membrane disease.

Board-certified in both nephrology and internal medicine, Dr. Saghir has been practicing in North Texas for approximately 24 years. He also has a keen interest in clinical research. With extensive experience in both research and hospital settings, Dr. Saghir is a valuable addition to our network of investigators.

CONTRIBUTIONS TO NEPHROLOGY & RESEARCH

Dr. Saghir has made numerous valuable contributions to nephrology, presenting at national conferences and collaborating with the National Kidney Foundation's clinical meetings. He has authored scientific papers on topics such as the effects of treatments for acute decompensated heart failure on renal function, and the comparison of ultrafiltration, nesiritide, and standard care. His dedication to research is reflected in his role as both a principal and sub-investigator in various clinical trials, advancing knowledge in nephrology and medicine.

LEADERSHIP & COMMITMENT TO PATIENT CARE

Dr. Saghir is well recognized for his commitment to patient care and excellence in nephrology, having earned multiple awards and honors. He has held leadership roles such as Chief of Medicine and served on the medical executive committee at the Medical Center of McKinney, TX. As an active member of the American Association of Clinical Nephrology and the American Medical Association, Dr. Saghir remains dedicated to advancing medical knowledge and providing exceptional care to his patients.



QAISER SHAFIQ, M.D.

CARDIOLOGY |
20+ YEARS OF EXPERIENCE

BACKGROUND & EXPERIENCE

Dr. Qaiser Shafiq is a cardiology specialist primarily located in Southgate, Michigan, with additional practices based in Toledo, Ohio. Dr. Shafiq has more experience with heart conditions than any other specialist in his area. He is affiliated with medical facilities including Beaumont Hospital – Dearborn and Beaumont Hospital – Taylor. Dr. Shafiq has overseen patient care in both research and hospital settings. With an educational background from Harvard Medical School in Translational Research and Clinical Investigation, Dr. Shafiq is a valuable addition to our prestigious network of Principal Investigators.

With his commitment to health and deep knowledge of cardiovascular diseases, he has dedicated his skills to Revival Research Institute's mission as an Investigator. Dr. Shafiq is currently conducting Phase II and Phase III clinical trials in cardiology and is committed to making treatments accessible and convenient for patients.

CLINICAL AND ACADEMIC CONTRIBUTIONS

Following his academic pursuits, Dr. Shafiq completed a fellowship in cardiovascular disease and interventional cardiovascular medicine at the University of Toledo. He then served as an Assistant Professor of Medicine in the Division of Cardiovascular Medicine at the University of Toledo School of Medicine. Dr. Shafiq's dedication to patient care and clinical excellence earned him the "Consultant of the Year" award from ER residents at Henry Ford Wyandotte Hospital in 2019. His passion for research and commitment to advancing medical education are evident through his numerous contributions to the field of cardiology.



RESEARCH INVOLVEMENT AND CLINICAL TRIALS

Dr. Shafiq joined Revival Research Institute in 2021 and has since served as the Principal Investigator on nine successful clinical trials. His research site, supported by a team of four full-time, extensively trained clinical coordinators, excels in recruiting participants and exceeding sponsors' expectations. The site is equipped with advanced tools—including centrifuges, ECG machines, and temperature monitoring devices—to ensure the highest standards of clinical trial management. Dr. Shafiq's dedication to producing high-quality, query-free data and delivering excellent patient care has made him a key asset to the Revival Site Network.

EDUCATION & EXPERIENCE

Having earned his medical degree from the University of Toledo in Ohio, Dr. Shafiq has over 20 years of experience in the field of cardiology. He completed his fellowship in cardiovascular medicine at the University of Toledo's Division of Cardiovascular Medicine.

ECHO-004 KOSMOS TRIO AND EJECTION FRACTION PIVOTAL STUDY

Enrollment Goal Metrics

Randomized **154 patients** within a compressed timeline to meet a critical FDA submission deadline.

WHAT WE DID

- **Rapid Response:** Stepped in as the new study site after a last-minute change and fully onboarded within days.
- **Expert Training:** Trained staff on the Kosmos device to capture specific cardiac views.
- **Collaborative Approach:** Maintained clear, consistent communication with EchoNous throughout the process.

HOW WE DELIVERED

Driven by a “can-do” attitude and a hands-on approach, our team worked tirelessly to ensure the study’s success, balancing speed with precision every step of the way.



Dear Revival Team,

This letter is to set forth our Company's gratitude to the excellent work of the Revival team located in Dearborn, Michigan, in their completion of our Company's study entitled "ECHO-004 KOSMOS TRIO AND EJECTION FRACTION PIVOTAL STUDY." The FDA required this study be completed in order to grant us clearance to continue to sell our flagship device, the Kosmos System, an AI-assisted EKG/ultrasound machine.

By way of background, in the summer of 2023, EchoNous was in the unfortunate position of losing its study site for the ECHO-004 Study. A tight FDA deadline loomed in November to submit the finalized results. EchoNous contacted Revival to assist us in our predicament and from there we were consistently met with a "can do" attitude of the Revival team, who quickly jumped in with "all hands-on deck" to act as our study site.

The ECHO-004 Study was no small task. It involved the training of Revival staff and their use of our Kosmos device to achieve specific cardiac views. Revival was very aggressive in pulling together the necessary people and organizing the logistics to make our study happen in the short window of time available. Revival even finished ahead of schedule!

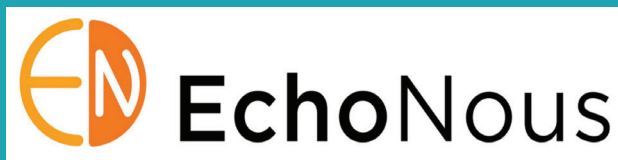
Throughout the study, Revival was professional, courteous, organized, and communicative. They worked long hours and were tireless in their dedication to finishing our study. Without the Revival team's help, EchoNous never would have met its FDA timeline, which in turn would have caused harm to EchoNous's product rollout and sales.

We at EchoNous are so appreciative to the Revival team for all that they have done to make our study a success.

Thank you!

Rebecca L Penn

R.P, General Counsel



DR. SHAFIQ'S SITE WITH TOP ENROLLMENT OF 7 SUBJECTS FOR THE MONTH OF NOVEMBER.

WAY TO GO!

Our independently owned site network spans across the states, with each site contributing a distinctive role in every aspect of clinical research. Each location operates with its own expertise and specialized focus, ensuring a tailored approach to meet diverse research needs. By leveraging the unique strengths of each site, we offer a comprehensive and versatile network that enhances the effectiveness and efficiency of clinical trials. This collaborative framework allows us to provide high-quality, customized solutions that address the specific requirements of each study, driving innovation and success across the entire network.



BAYER'S EXPERIENCE WITH US

Dear Team,

The US Team at Bayer would like to extend a heartfelt thank you to your site for the hard work and dedication in contributing to Hispanic Patient Inclusion Diversity Randomizations over the past week! Your hard work is noticed and recognized!

THANK YOU!

OCEANIC-AF Team



Extending a heartfelt thank you to your site for the hard work and dedication in contributing Hispanic patient inclusion Diversity Randomizations

TEXAS CARDIOLOGY SITE IN FOCUS

At Revival Research Institute, our Cardiology and Nephrology site continues to deliver excellence in high-enrollment, high-complexity clinical trials. From rare kidney disorders to multifaceted cardiovascular conditions, our team is equipped with the knowledge, infrastructure, and passion to drive results.

KEY HIGHLIGHTS

- Successfully completed the EchoNous study, a complex, 24-day protocol requiring rapid recruitment and intensive patient coordination. The site enrolled 16 patients in just 2 days under the leadership of Dr. Karim.
- Currently ranked 6th in randomization for the Kardia 3 Hypertension Study.
- Achieved Top 10 Global Enrollment status in the Kardia 2 study.
- Proactively identified a potential subject for randomization in the rare-disease IgA Nephropathy study, demonstrating our team's reach into specialized patient populations.

STUDY PERFORMANCE OVERVIEW

- Studies Initiated: 14 Active
- Total Screenings Conducted: 567
- Participants Randomized: 91

COMMITTED TO REDEFINING PATIENT CARE

ONE CLINICAL TRIAL AT A TIME



THE WAY FORWARD

Revival's Site Network is committed to advancing clinical research through innovation, collaboration, and community engagement. Our focus is on optimizing trial procedures, integrating cutting-edge technologies, and enhancing efficiency.



FOR MORE INFORMATION

☎ (248) 721-9539

@ info@rev-research.com